



# Earthquake Rebuild

## A Design and Mathematics Game

Danial Smith, Gordon Erlebacher, Fenfeng Ke



### Introduction

**E**arthquake Rebuild, or E-Rebuild, is a game focused on the giving students an informal knowledge of mathematics using architecture and design principles. E-Rebuild is designed to be a tool to assist in formal education and should be used in conjunction with traditional methods of teaching to reinforce the informal knowledge gained from these exercises. Primarily focused on grades sixth through eighth, E-Rebuild will focus on being fun. It is a game about rebuilding a village after an earthquake. Inspiration is drawn from Re:Start, a project in Christchurch City in New Zealand. After the 2011 earthquake, rebuilding quickly became a priority. Shipping containers were used to build a mall and city center. The structures were designed to be temporary, but still aesthetically pleasing. Using this story as a backdrop, learning and assessment will be done without the players knowledge. Using evidence-centered design, the tasks involved will measure competencies in certain areas to build a model of the player. This model will then be used for scaffolding and difficulty scaling. Dynamically scaled difficulty will allow for a targeted play experience and will increase player engagement. Procedurally generated levels using the model of the player will allow us to improve the model of the player by specifically using tasks designed to evaluate the strengths and weaknesses of each student individually.



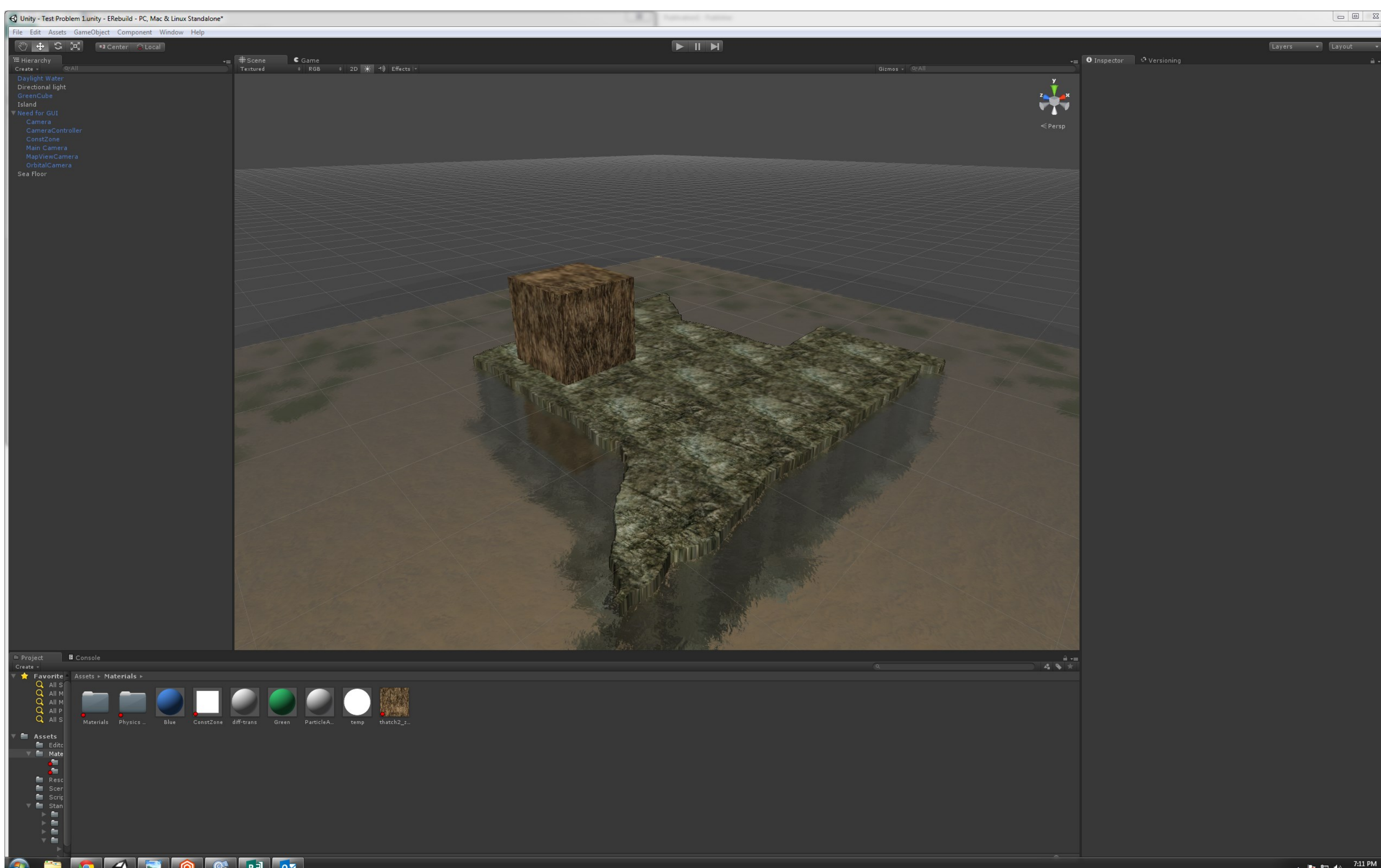
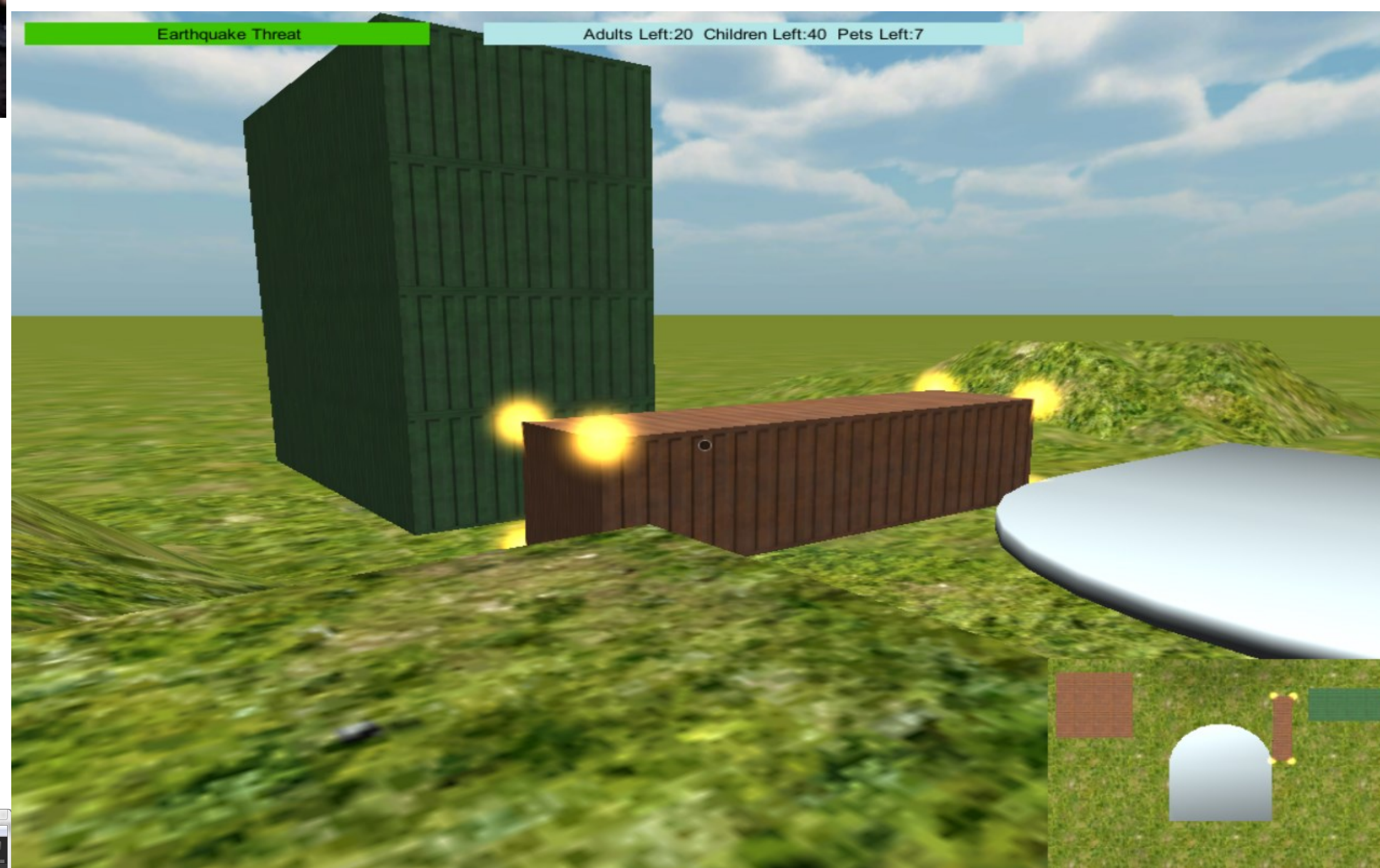
### Current Status

Getting started with a project including people from diverse backgrounds and differing skill levels took some time. The workflow, project sharing procedure, and bug reporting/feature request forms are all fully realized. Currently, Earthquake Rebuild has the majority of the mechanics implemented. This includes:

- First Person Adventure Views for exploration and item collection.
- Third Person Construction Views for building structures in the game world.
- Various tools for collecting, measuring, cutting, scaling, moving objects.

### Unique Features

- ◆ Dynamically Scaling Difficulty
- ◆ Procedurally Generated Levels
- ◆ Pseudorandom Progression Paths
- ◆ Reports to Educator of Problem Area
- ◆ Persistent Collaborative Sandbox Mode



### Moving Forward

With the mechanics implemented and all the kinks worked out of the system, I expect a much shorter development time for features in the future. Our next steps will be:

- Develop scoring and win/loss criteria
- Level and problem development.
- Detailed logging of players actions.
- Developing methods to model the player.
- Scaling difficulty with respect to the player
- User Testing and model refinement

A special thanks to Gordon Erlebacher, Fenfeng Ke, Matthew Venture, Valerie Schute, Kathleen Clark, and Anne Taylor.